



TELC



AASCU American Association
of State Colleges and
Universities
Delivering America's Promise

Teaching English while Learning Chinese

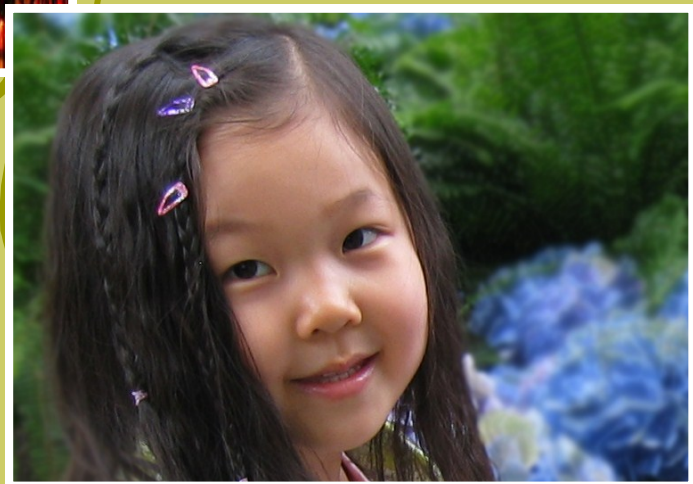
Shanghai, China

ESL TEACHING POSITIONS IN CHINA



- ♦ WORK IN THE SHANGHAI SCHOOL SYSTEM AND TAKE CLASSES IN MANDARIN
- ♦ RECRUITED BY SEF INTERNATIONAL IN PARTNERSHIP WITH THE AMERICAN ASSOCIATION OF STATE COLLEGES AND UNIVERSITIES (AASCU)

中國上海



WWW.SEF-INTERNATIONAL.COM



TEL C

Teaching English while Learning Chinese



NEW PARTNERSHIP WITH AASCU

The American Association of State Colleges and Universities (AASCU) is a higher education association, representing 425 accredited public colleges and universities and systems of public higher education throughout the United States and its territories. The mission of AASCU is to promote appreciation and support of public higher education; to advocate for students and member institutions; to provide program support and professional development opportunities for senior leaders to strengthen academic quality, increase access and inclusion. Additionally AASCU is committed to making a difference for International Education by encouraging and supporting international exchanges and programs.

Website: <http://www.aascu.org>

TEL C PROGRAM

Teaching English while Learning Chinese (TEL C) is a full-time paid ESL job opportunity with free Chinese lessons once a week. Teaching consists mainly of Oral English; one-year commitment (renewable):

- ◆ Employer is *Shanghai Pacican Academy* (Pacican); the recruiter is SEF International;
- ◆ Pacican is a Shanghai branch of the China Center for International Educational Exchange (CCIEE) under the Ministry of Education of China;
- ◆ Working with the Shanghai Education Commission, Pacican hires “English Experts” and places them in many (400+) public and private schools in Shanghai and its suburbs (K-12);

Pacican mission:

To combine the Western ways of teaching and learning in a natural and fun environment with the Chinese methods of monitoring and evaluation to meet the increasing demand of learning English by parents of Chinese school children.

SEF International:

SEF International is a Virginia-based organization with its main focus in international education. SEF International has been working for many years with Chinese educational organizations, American higher education institutions, and organizations with China-related projects.



DANIEL FROM UVA (TEL C TEACHER 2010)

“Having a heart of patience, passion and assurance, Pacican teachers are welcomed by students, their parents and Chinese schools, because the teachers inspire Chinese students’ passion for English.”



SHANGHAI PACICAN ACADEMY

中國上海

Shanghai, China

TELC BENEFITS

- ◆ Competitive salary (at least twice as much as that of the local teachers);
- ◆ Free Chinese lessons every week and some weekend cultural activities;
- ◆ Work insurance (Comprehensive Accidental Insurance);
- ◆ Foreign Expert Certificate (for work visa and higher salary);
- ◆ Intensive orientation and job training;
- ◆ Reimbursement of international airfare after completing a year's contract;
- ◆ End of year bonus and commuter allowance;
- ◆ Assistance from a bi-lingual Pacican coordinator;
- ◆ Generous vacation time with allowance;
- ◆ Assistance in finding housing ... and *much more*.

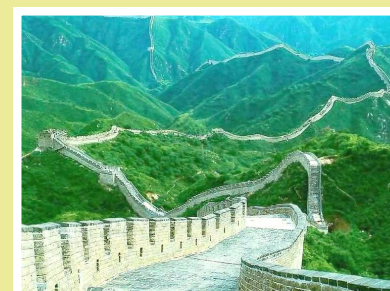


MINIMUM REQUIREMENTS

- ◆ A bachelor's degree in any major;
- ◆ A fluent speaker of English (holding passports of an English speaking country);
- ◆ Two years of teaching experience *or* a TESOL/TEFL Certificate (minimum 120-hour course from any reliable school-based or on-line organizations).

* Please note:

- ◆ The two-year experience and TESOL certificate requirements can be waived if the candidate holds a master's degree or a Ph.D.;
- ◆ Chinese language skills are preferred but not required;
- ◆ Applications are accepted on a rolling basis.





TELC

中國上海

TELC TEACHERS' COMMENTS

STEPHEN FROM CANADA (TELC TEACHER 2011)

"Regarding how my year has gone, in a word: excellently. Honestly, this is the best job I have ever had, and I am truly happy here in China. Everyone at Pacican is a professional, and the teachers at the two schools I work at are a dream to work with. Of course, the children are precious, and I rejoice every day that I can go and work with the wonderful children. It really is a dream job for me, and I am so very glad I got this job."



One Weekend Cultural Activity - Chinese Tea Art

TELC TEACHER WORKLOAD

- ◆ 26 -35 periods of classes per week (no more than 20 hours of teaching);
- ◆ Students' age range: 7-15; class size: 15-50;
- ◆ Dress code: business casual;
- ◆ Textbooks, flashcards and other teaching material provided.

ORIENTATION

- ◆ SEF International Pre-Departure orientation in August with reference material;
- ◆ Pacican two-week intensive orientation upon arrival in Shanghai right before school starts (room and board except for dinner free during that week);
- ◆ Regular TELC teachers meetings and seminars during the school year.



Shanghai Orientation 2010



A Fun Elementary Classroom





Teaching English while Learning Chinese



LIVING IN SHANGHAI, CHINA

SHANGHAI 上海

- ◆ The largest city and the commercial center in China;
- ◆ One of the largest metropolitan areas in the world, with a total population of over 18 million, and 200,000 full-time foreigners working;
- ◆ The average annual temperature is 64 Fahrenheit;
- ◆ International services available with companies such as Wal-Mart, Citigroup, Bank of America.
- ◆ One of the most livable cities in the world in terms of safety and livability.



A TELC Teacher's Bedroom



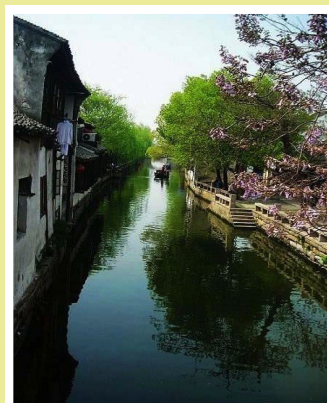
An Apartment Community



The Skyline of Shanghai

COST OF LIVING

- ◆ High TELC salary, compared to local standard;
- ◆ Average rent: RMB ¥1,500 to ¥2,500/month, for a one-bedroom suite, furnished;
- ◆ Average savings: RMB ¥5,000 per month;
- ◆ Some teachers share accommodation to save more.



Zhouzhuang



Hangzhou



Teaching English while Learning Chinese



Pacican Building



Pacican Restaurant



TELC Teacher Award

TELC TEACHERS' COMMENTS

- ◆ This job has provided me the unique opportunity to witness first hand, and encounter intimately an extremely influential country at a pivotal moment in her history. Not to mention the fact that we live in Shanghai, a breathing emblem of China's transitional moment and internationally renowned cosmopolitan city;
- ◆ I live on a generous budget for Chinese standards, which provides me with more than comfortable accommodations and many opportunities for restaurant exploration and other recreation. I still have plenty of funds with which I can see not only much of China, but also Tibet, South East Asia, and Japan;
- ◆ The one week orientation greatly helped to assuage our fears of teaching for the first time (It used to be a week of orientation);
- ◆ During orientation we were able to form an extended group of friends, with whom we socialize with very often;
- ◆ The coordinators are all extremely responsive, helpful, and sweet and we have all been paid fairly and on time;
- ◆ The Metros, by the way, are also the cleanest and most navigable underground transportation we've ever seen. Way better than those in the States.

— From *Daniel, Sarah, Stephen, Nick, Andrew, and Chris*



SEF INTERNATIONAL

13022 Monroe Manor Dr., 1st Floor Oak Hill, VA 20171

TEL: 571-203-8620 Email: sefinternational@gmail.com



TELC APPLICATION

The application process starts by your filling out the TELC Application Form which is found on our website www.sef-international.com. Besides the **TELC Application Form**, a completed application package should also contain:

- (1) A photo copy of your passport photo page;
- (2) A Personal Statement (Please see the Application Form for detailed requirements);
- (3) A Recommendation Letter from a professor if you are just graduating from college; or
- (4) An Employer Reference Letter if you are working;
- (5) A Physician's Letter stating that you are in good health to travel and work overseas;
- (6) A copy of your transcript;
- (7) Application fee: \$75.

A Checklist link is also available on SEF International website to help you send in a completed application package. The completed application package needs to be emailed and mailed to SEF International.

Please note:

- ◆ Chinese school year: 1st Monday of September to end of June;
- ◆ Arrival: Around August 15th;
- ◆ Two interviews: One pre-screening interview by a SEF International staff member, and one phone interview by Pacican VP;
- ◆ Application accepted on a rolling basis year-round;
- ◆ Normally takes around one month to hear the results;
- ◆ A few clean and clear copies of your degree certificate(s) and the original copy of your TESOL certificate should be brought to China.





TELC



Teaching English while Learning Chinese



SEF INTERNATIONAL

Contacts:

Sufei Li, Managing Director

France Pruitt, Senior Advisor

Manda Fang, Project Manager

Address:

13022 Monroe Manor Dr. 1st Floor

Oak Hill, VA 20171

T: 571-203-8620 / F: 571-203-8622

Email: sefinternational@gmail.com

Website: www.sef-international.com

中國上海

Shanghai, China

